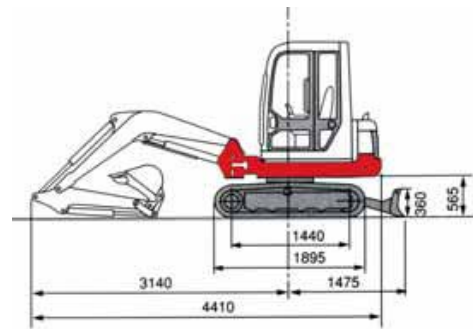
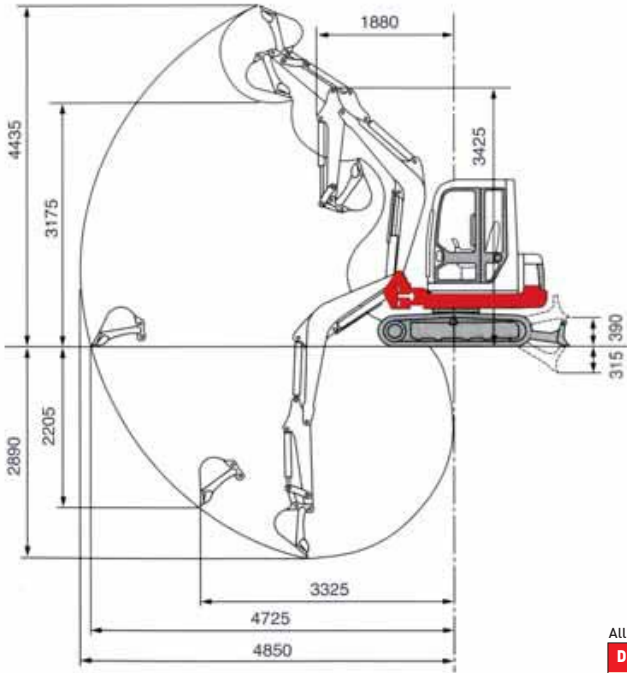
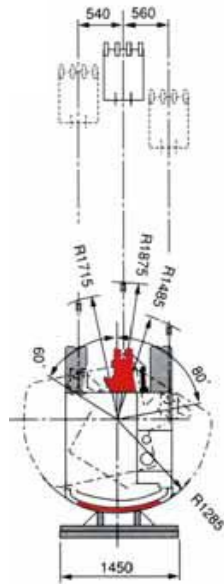
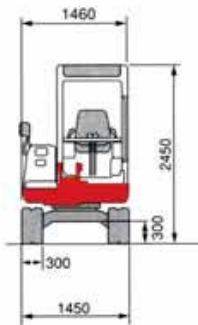


TB125

OPERATING RANGE



In accordance with our established policy of constant improvement, we reserve the right to amend these specifications at any time without notice. Photographs shown may feature non-standard equipment.



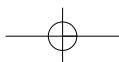
All Dimensions unless otherwise stated are in millimeters

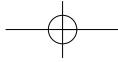
DIMENSIONS & WEIGHT		OPERATING INFORMATION	
Operating Weight (kg)	2800	Max. Dig Depth	2890
Length (transport)	4410	Max. Dump Height	3175
Width	1450	Max. reach at ground level	4725
Height	2450	Max. Vertical Dig Depth	2205
Ground Clearance	300	Max. Bucket Dig Force (Kn)	20.6
Min front swing radius (80° boom swing)	1485	Max. Arm Dig Force (Kn)	14.7
Tail swing radius	1285	UNDERCARRIAGE	
Dozer Blade (wxh)	1450x360	Traction Motor	Axial Piston
ENGINE		Traction Drive	Planetary
Make/Model	Yanmar/3TNE82A	Traction Brake	Disc
Rated Output/RPM	16.8kW/2300	Track Width	300
Maximum Torque	84.3Nm	Ground Contact Length	1440
Cylinders/Displacement	3/1330cc	Ground Pressure (kpa)	29.3
Electrical System	12volt 40amp	Travel Speed (K/ph)	2.7/4.8
SWING SYSTEM		Maximum Gradeability	30°
Boom Swing angle (L/R)	80°/60°	HYDRAULIC SYSTEM	
Slew Speed (rpm)	9.6	Set Pressure (bar)	210
Slew Motor	Axial Piston	Pump Type	Variable(P1+P2)+Gear(P3+P4)
Slew Brake	Disc	Hydraulic Flow (l/min)	29x2+19.8+10.4
		Auxiliary Flow (l/min)	48.8
		CAPACITIES (l)	
		Hydraulic system	74
		Fuel tank	51
		Engine Lubrication	5.0
		Cooling System	5.4

TAKEUCHI

Takeuchi Mfg (UK) Ltd, Lynroyle Way, Rochdale, Lancs OL11 3EX Tel: 01706 657722 Fax: 01706 657744
e-mail: sales@takeuchi-mfg.co.uk www.takeuchi-mfg.co.uk

Southern Office at Thatcham, Newbury Tel: 01635 877 196 Fax: 01635 877 195





TB125

FULLY HYDRAULIC COMPACT EXCAVATOR



TAKEUCHI

TAKEUCHI

